



Structural Analysis & Design Software



www.dlubal.com



Amy Heilig, PE
Presenter

CEO - USA Office



Alex Bacon, EIT
Moderator

Technical Support Engineer



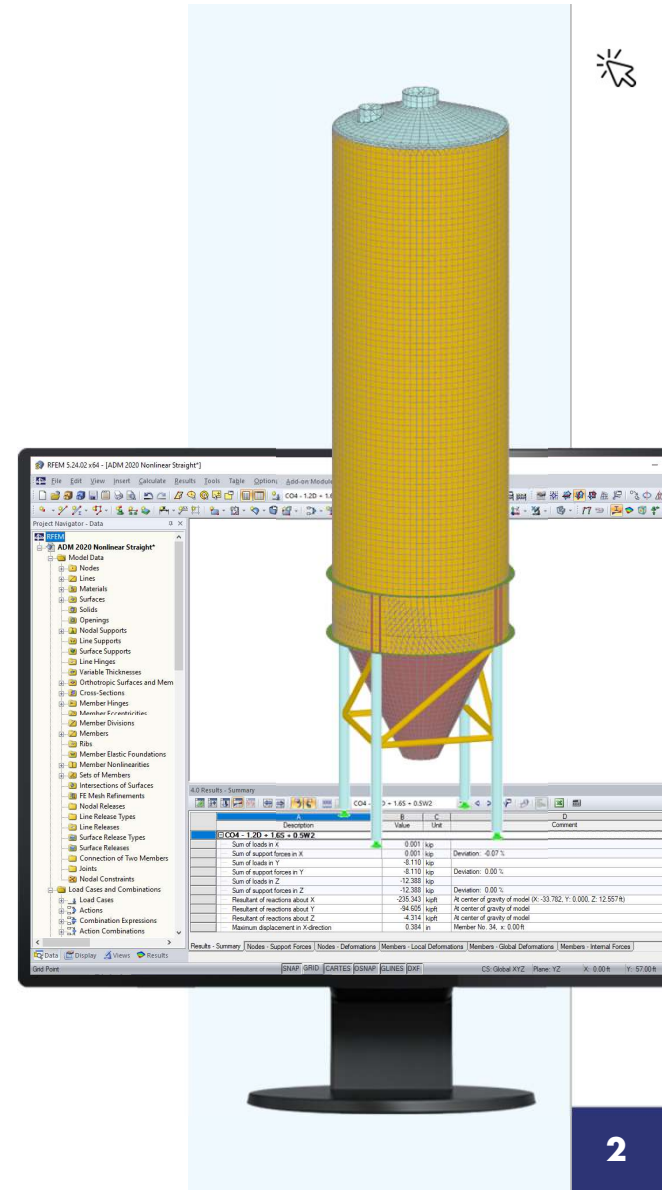
Cisca Tjoa, PE
Moderator

Technical Support Engineer



Webinar

Steel Silo Design in RFEM 6



Questions During the Presentation



GoToWebinar Control Panel
Desktop



The screenshot shows the GoToWebinar desktop control panel interface. It features a sidebar on the left with icons for audio, chat, and a hand. The main window is divided into sections: 'Audio' and 'Questions'. The 'Audio' section includes a 'Sound Check' indicator, radio buttons for 'Computer audio' (selected) and 'Phone call', a 'MUTED' status with a microphone icon, and volume controls. The 'Questions' section has a text input field with the placeholder '[Enter a question for staff]', a 'Send' button, and the 'Webinar ID: 373-901-987' at the bottom. The GoToWebinar logo is also present at the bottom of the window.

Show or hide control panel

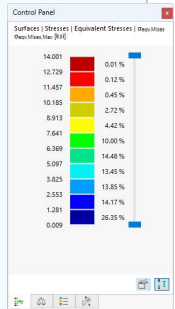
Adjust audio settings

Ask questions



Content

- 01 Structure modeling, loading, and analysis in RFEM 6
- 02 Surface design utilizing Stress-Strain Analysis Add-on
- 03 AISC member design utilizing Steel Design Add-on
- 04 Buckling considerations utilizing Stability Analysis Add-on



— Dlubal Software Information



- Videos and recorded webinars
- Events and conferences
- Knowledge Base articles
- FAQs

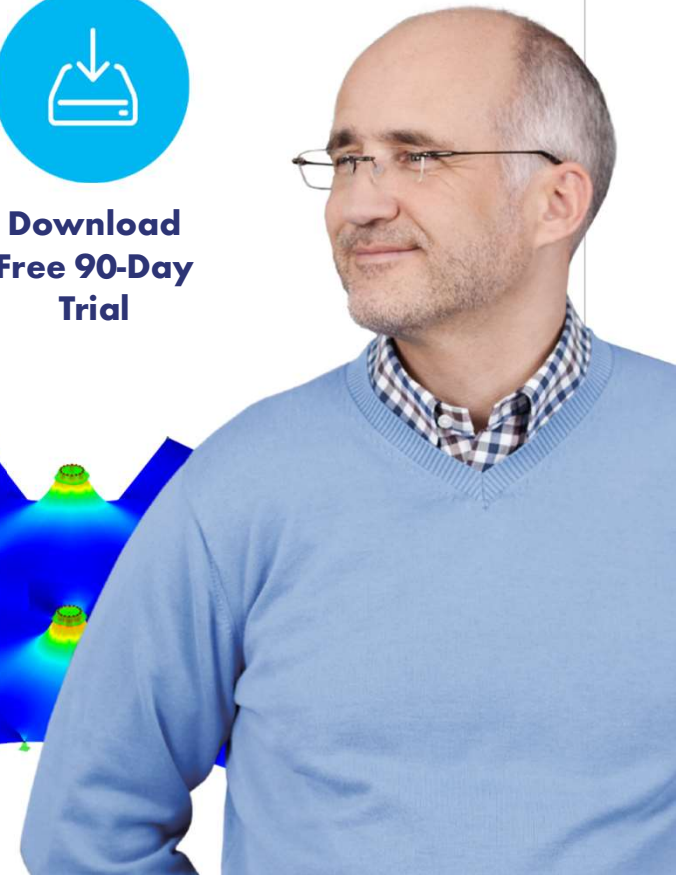
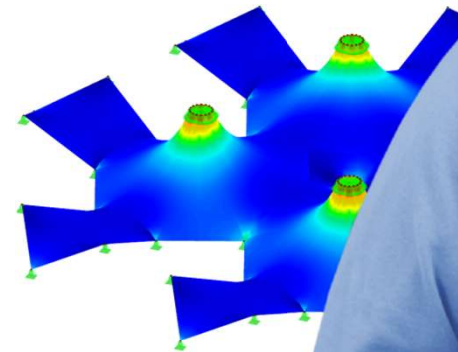
Visit website
www.dlubal.com



Register for
Online
Training



Download
Free 90-Day
Trial



Dlubal Software, Inc.
The Graham Building, 30 South 15th Street,
15th Floor, Philadelphia, PA 19102

Phone: (267) 702-2815
Email: info-us@dlubal.com



Webinars and PDH

Upcoming Webinars

- 1 Register www.dlubal.com
- 2 Support & Learning → Webinars
- 3 Registration through email



PDH Certificates

- 1 Automatically emailed to participants
- 2 Available for the full presentation
- 3 Additional attendees request PDH to info-us@dlubal.com





www.dlubal.com