



Structural Analysis & Design Software

www.dlubal.com



Dipl.-Ing. (FH) Andreas Hörold
Organizer

Marketing & Public Relations
Dlupal Software GmbH



Ing. Doğukan Karataş, M.Sc.
Co-Organizer

Product Engineering
Dlupal Software GmbH



Ing. Jaroslav Brož, PhD
Co-Organizer

Scrum Master
Dlupal Software Prague



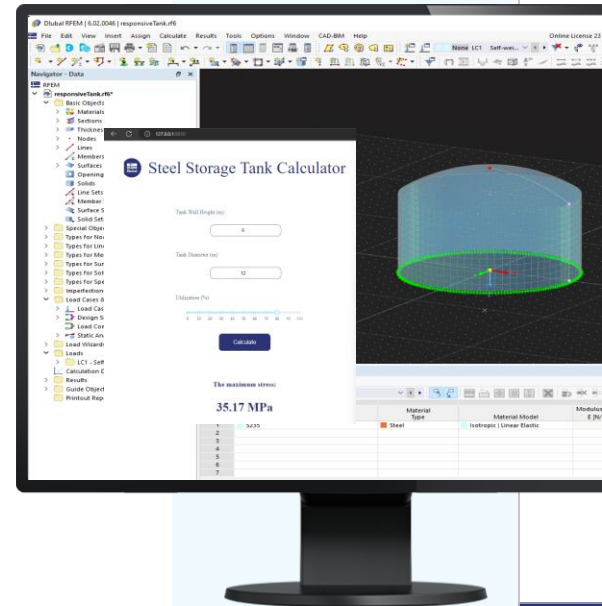
Dipl.-Ing. Frank Faulstich
Co-Organizer

Product Engineering & Customer Support
Dlupal Software GmbH



Webinar

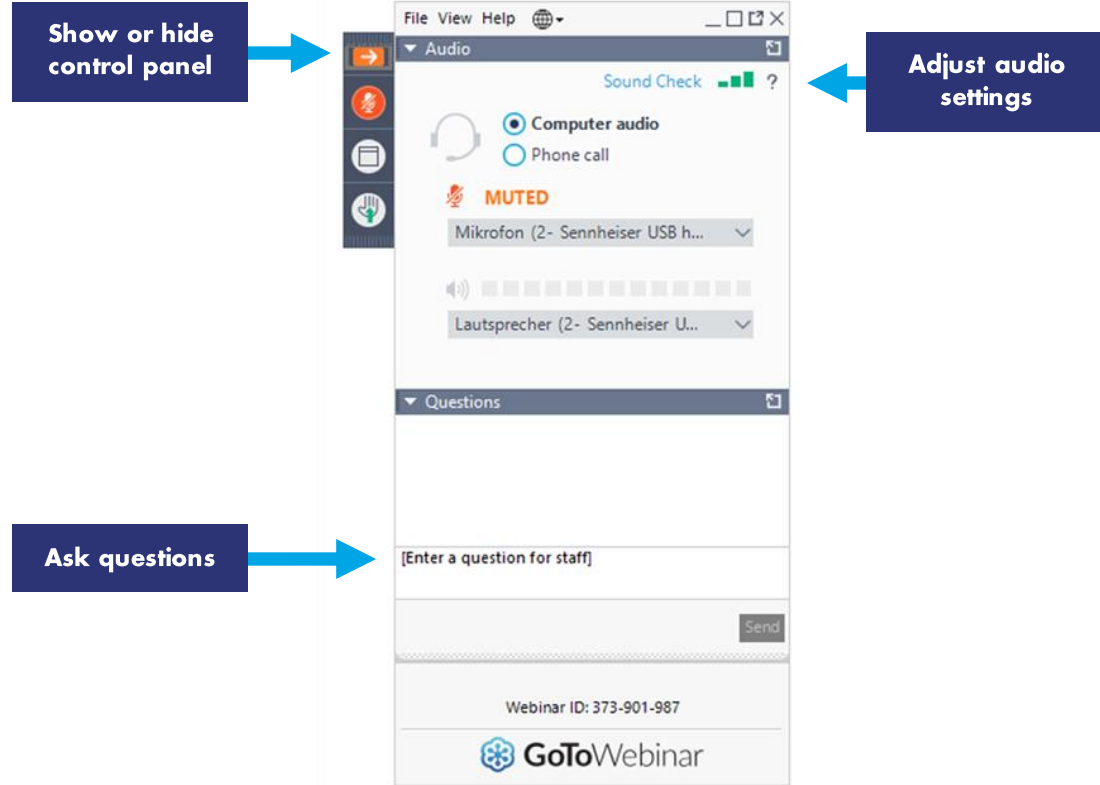
Integration of RFEM 6 with Web Applications Using Webservice Python Library



Questions During the Presentation

 GoToWebinar Control Panel Desktop

 E-mail: info@dlubal.com



The screenshot shows the GoToWebinar control panel interface. A vertical sidebar on the left contains several icons: a right-pointing arrow, a microphone, a document, and a hand. A blue arrow points from a dark blue box labeled "Show or hide control panel" to the right-pointing arrow icon. The main window has a menu bar with "File", "View", and "Help". Below the menu bar is a "Sound Check" section with a green bar and a question mark. Underneath are radio buttons for "Computer audio" (selected) and "Phone call". A red "MUTED" indicator is present. Below that are dropdown menus for "Mikrofon (2- Sennheiser USB h..." and "Lautsprecher (2- Sennheiser U...". A volume slider is also visible. The "Questions" section is expanded, showing a text input field with the placeholder "[Enter a question for staff]" and a "Send" button. At the bottom, the "Webinar ID: 373-901-987" and the "GoToWebinar" logo are displayed. A blue arrow points from a dark blue box labeled "Adjust audio settings" to the "Sound Check" area. Another blue arrow points from a dark blue box labeled "Ask questions" to the text input field.



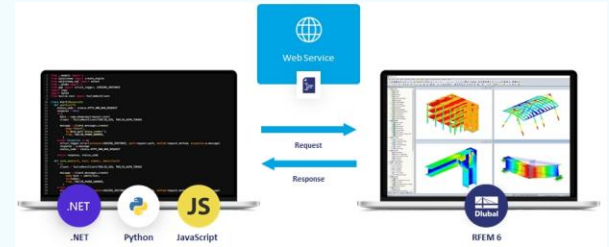
CONTENT

01 What is API? What is WebService?

02 What is new in WebService?

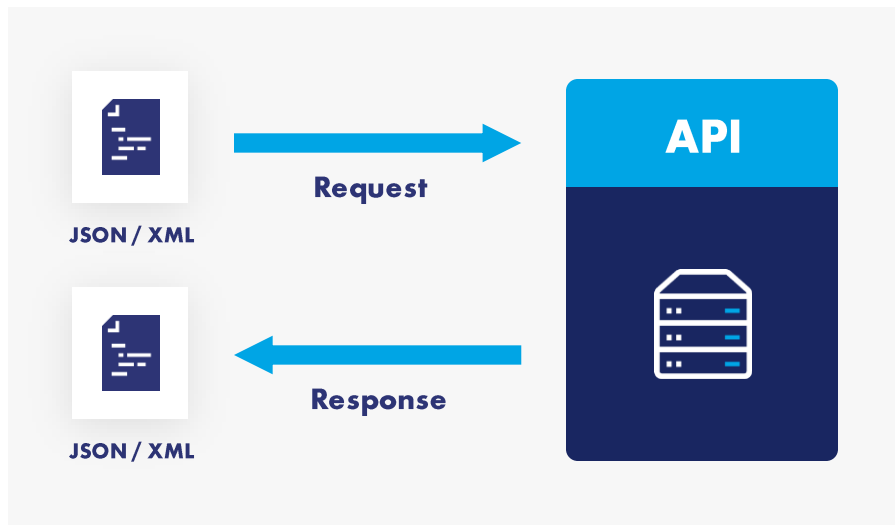
03 Getting Started & Installation

04 Examples





What is API?





What is Webservice?



Request

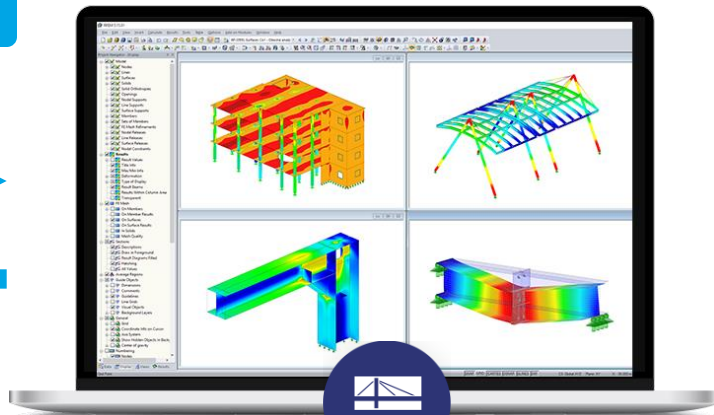


Response

```

1 from ..models import *
2 from sqlalchemy import create_engine
3 from sqlalchemy import select
4 from ..globals import *
5 from app import struct_logger, LOGGING_INSTANCE
6 import copy
7 import boto3
8 from twilio.rest import TwilioRestClient
9
10 class Alert(Resource):
11     def post(self):
12         status_code = status.HTTP_400_BAD_REQUEST
13         response = None
14         try:
15             data = copy.deepcopy(request.json)
16             client = TwilioRestClient(TWILIO_SID, TWILIO_AUTH_TOKEN)
17             message = client.messages.create(
18                 body="Alert",
19                 to=data.get('phone_number'),
20                 from_='TWILIO_PHONE_NUMBER',
21             )
22         except Exception as e:
23             struct_logger.error(instance=LOGGING_INSTANCE, path=request.path, method=request.method, exception=e.message)
24             response = e.message
25             status_code = status.HTTP_400_BAD_REQUEST
26         return response, status_code
27
28     def send_sms(self, text, number, identifier):
29         client = TwilioRestClient(TWILIO_SID, TWILIO_AUTH_TOKEN)
30         message = client.messages.create(
31             body=text + identifier,
32             to=number,
33             from_='TWILIO_PHONE_NUMBER',
34         )
35         except Exception as e:
36             struct_logger.error(instance=LOGGING_INSTANCE, path=request.path, method=request.method, exception=e.message)
37             response = e.message
38             status_code = status.HTTP_400_BAD_REQUEST
39         return response, status_code
40
41

```



.NET



Python



Java

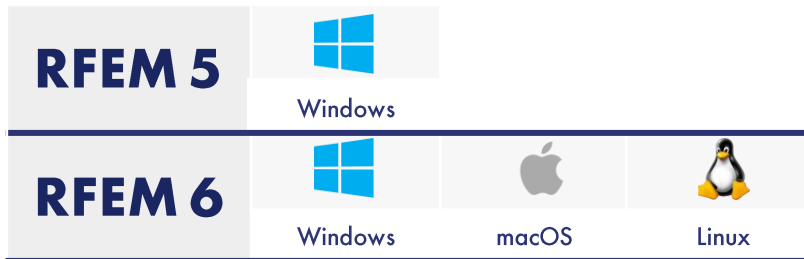


RFEM 6



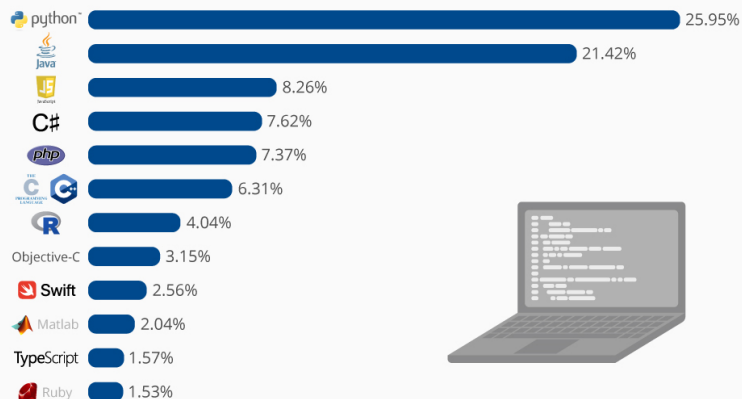


Difference between COM and Webservice



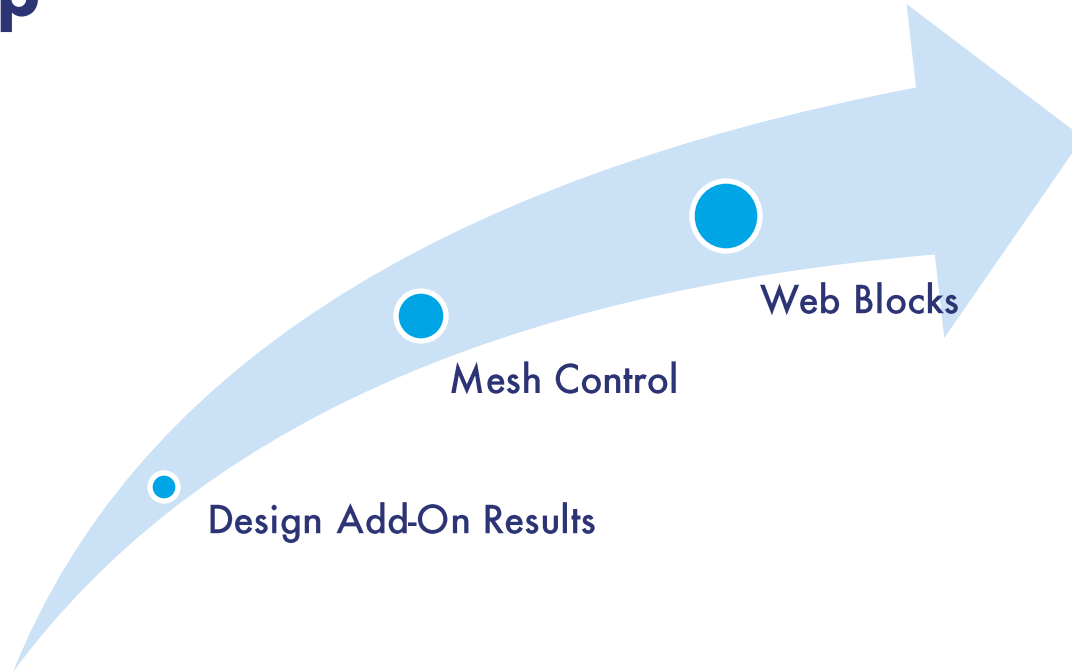
The Most Popular Programming Languages

Share of the most popular programming languages in the world*





Roadmap





Roadmap

RFEM Python HLF Development Status
Updated 2 weeks ago

Filter cards

106 Implemented	12 In Progress/Partially Implemented	8 Short Term	14 Long Term
Types for Concrete Design - ConcreteSurfaceReinforcements Added by heetrojvadiya	Load Cases and Combinations - ResultCombination Added by OndraMichal	Add On - Timber Design Added by dogukankaratas	AddOn - CO2 Estimation Added by dogukankaratas
Types for Concrete Design - ConcreteReinforcementDirections Added by heetrojvadiya	Timber Design - TimberUltimateConfigurations Added by heetrojvadiya	AddOn - Stress Strain Analysis Added by dogukankaratas	AddOn - Steel Joints Added by dogukankaratas
Types for Concrete Design - ConcreteEffectiveLength Added by heetrojvadiya	AddOn - Modal Analysis Added by dogukankaratas	AddOn - Structure Stability Added by dogukankaratas	AddOn - Aluminum Design Added by dogukankaratas
Types for Concrete Design - ConcreteDurability Added by heetrojvadiya	Timber Design - TimberServiceLimitStateConfigurations Added by heetrojvadiya	Load Wizards - Wind Load Added by dogukankaratas	AddOn - Masonry Design Added by dogukankaratas
Types For Timber Design - TimberServiceClass Added by heetrojvadiya	Steel Design - SteelUltimateConfigurations Added by heetrojvadiya	Load Wizards - Snow Load Added by dogukankaratas	AddOn - Geotechnical Analysis Added by dogukankaratas
Types For Timber Design -	Steel Design - SteelServiceabilityConfiguration	Load Wizards - MemberLoadsFromFreeLineLoad Added by dogukankaratas	AddOn - Wind Simulation Added by dogukankaratas
		Load Wizards -	AddOn - Building Model Added by dogukankaratas



Getting Started & Installation

- Download Repository as ZIP

Repository: Dlubal-Software/RFEM_Python_Client

Buttons: Code, Issues, Pull requests, Discussions, Actions, Projects, Wiki, Security, Insights

Clone options: Clone (HTTPS, GitHub CLI), Open with GitHub Desktop, Download ZIP

File	Description	Time
.github	Right places for CODEOWNERS	
.vscode	Merge remote-tracking branch 'ye'	
Examples	Merge pull request #112 from Dlu	
RFEM	Merge remote-tracking branch 'ye'	
UnitTests	bug 24241 fixed	
assets	Added report from UT and settings	5 months ago
docs	Merge pull request #104 from Dlubal-Software/dogukaratas-Document...	19 days ago
package	added init file	5 days ago
.gitignore	unit test fix	21 days ago
.nojekyll	moved nojekyll	5 months ago
LICENSE	Initial commit	11 months ago
PythonWSClient.code-workspace	Example of export_to and save	8 months ago
README.md	updated coverage	13 days ago
pylintrc	R0912, W1405 added	yesterday

- Clone Repository via Git Bash

```
MINGW64~/c/Users/KaratasD/Desktop
KaratasD@KaratasD-nb1 MINGW64 ~/Desktop
$ git clone https://github.com/Dlubal-Software/RFEM_Python_Client.git
```

- Install Library via PyPi

Search projects

RFEM 1.4.0

pip install RFEM

Released: Mar 24, 2022

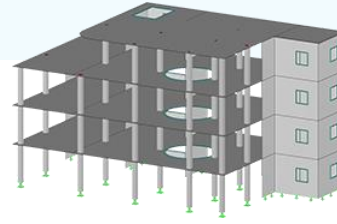
Web Service/API project for RFEM

```
Command Prompt
Microsoft Windows [Version 10.0.19043.1526]
(c) Microsoft Corporation. All rights reserved.

C:\Users\KaratasD>pip install RFEM
```

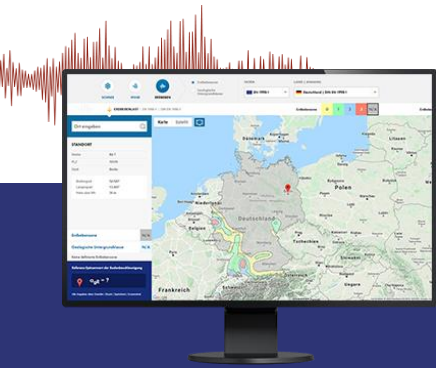


Free Online Services



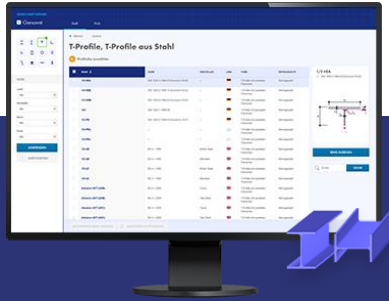
Geo-Zone Tool

Dlubal Software provides an online tool with snow, wind and seismic zone maps.



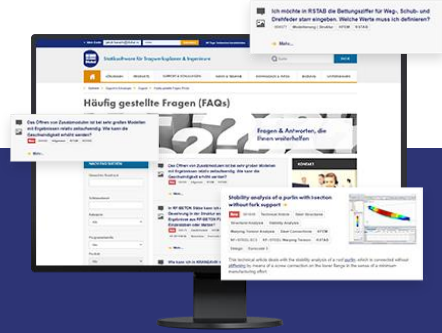
Cross-Section Properties

With this free online tool, you can select standardized sections from an extensive section library, define parametrized cross-sections and calculate its cross-section properties.



FAQs & Knowledge Base

Access frequently asked questions commonly submitted to our customer support team and view helpful tips and tricks articles to improve your work.



Models to Download

Download numerous example files here that will help you to get started and become familiar with the Dlubal programs.

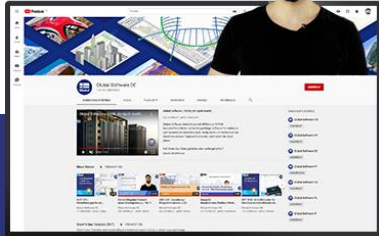




Free Online Services

Youtube Channel - Webinars, Videos

Videos and webinars about the structural engineering software.



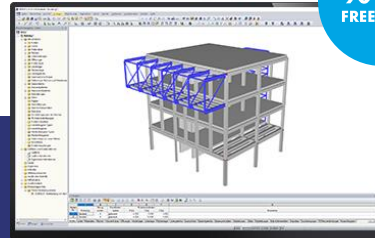
Webshop with Prices

Configure your individual program package and get all prices online!



Trial Licenses

The best way how to learn using our programs is to simply test them for yourself. Download a 90-day free trial version of our structural analysis & design software.



90-DAY FREE TRIAL

We offer free support via email and chat



— Get Further Details About Dlubal



Visit website

www.dlubal.com

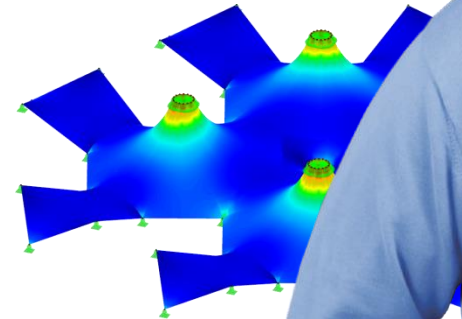
- Videos and recorded webinars
- Newsletters
- Events and conferences
- Knowledge Base articles



See Dlubal Software in action in a webinar



Download free trial license



Dlubal Software GmbH
Am Zellweg 2,
93464 Tiefenbach, Germany

Phone: +49 9673 9203-0
E-mail: info@dlubal.com



www.dlubal.com