

# Transfer Softlock with RUS Tool

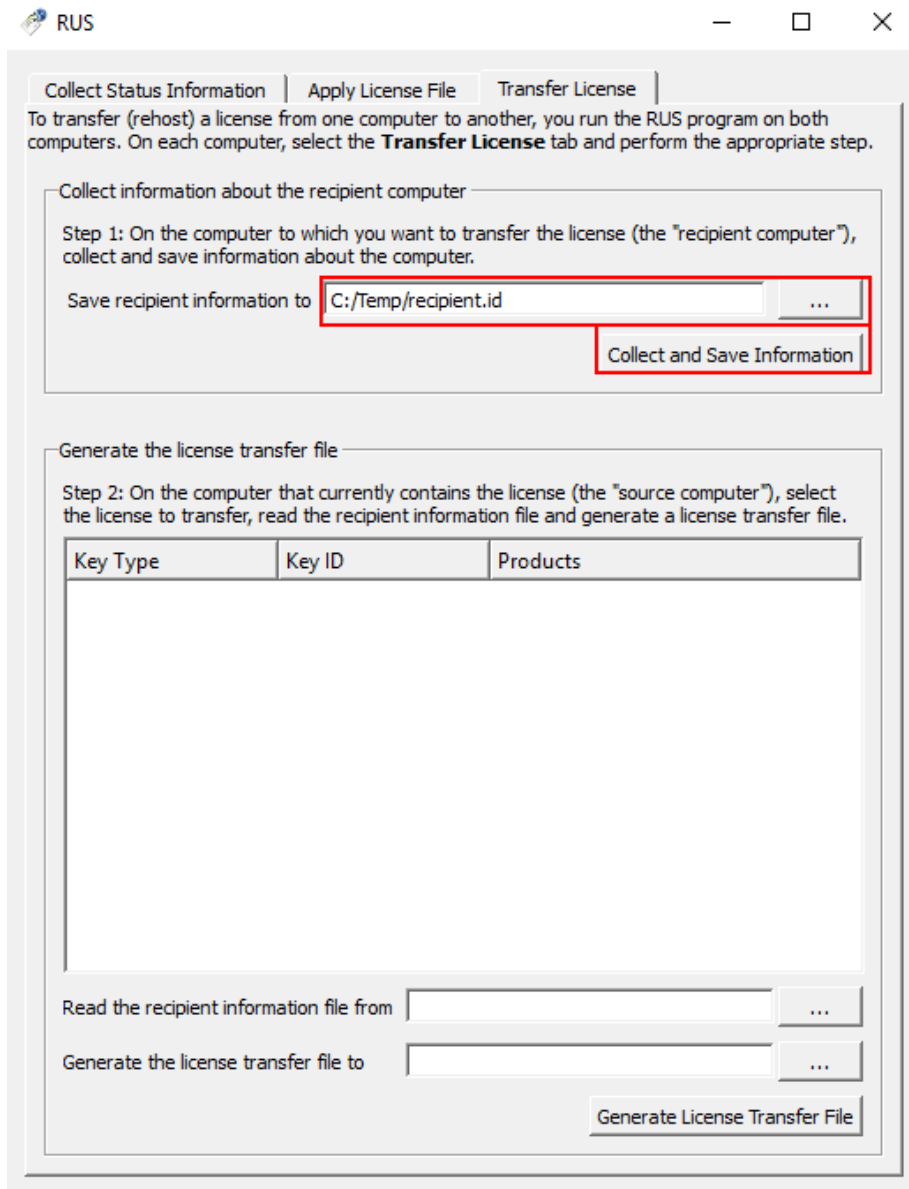
Please download the RUS tool first.

<http://download.dlubal.com/?file=RUS.exe>

Target PC = NEW PC

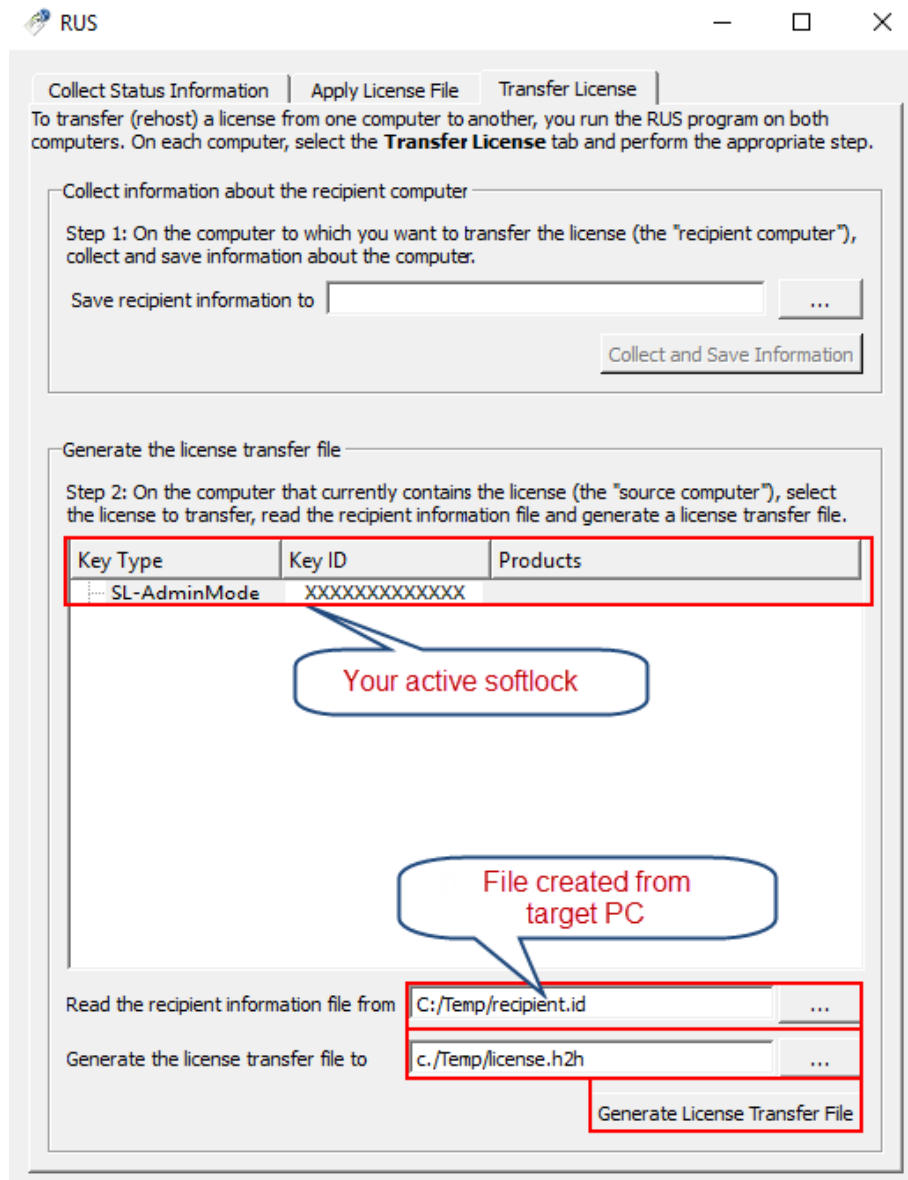
Source PC = OLD PC (with active Softlock)

1. Run tool RUS.exe on the **target PC**. Select the tab *Transfer License* in the RUS dialog box.



2. Specify path of the output \*.id file with recipient information and click on the button *Collect and Save Information*.

- Run tool RUS.exe on the **source PC** and select the tab *Transfer License*.



- Select the SL license you want to transfer.
- Read the recipient information file (\*.id). Specify the location of the output license transfer file (\*.h2h). Click the button *Generate License Transfer File*.
- Run tool RUS.exe on the target PC and open the tab *Apply License File*.
- Upload the license transfer file (\*.h2h) and click on the button *Apply Update*.
- Run the Dlubal Software and import the current author.ini file (also possible in DEMO mode) by using Help > Authorization. After restarting the software, you can use it as a full version.

Your team from DLUBAL SOFTWARE GMBH