



Structural Analysis & Design Software

www.dlubal.com



Webinar



Dipl.-Ing. (FH) Alexander Meierhofer
Organizer

Head of Product Engineering Concrete & Customer Support
Dlubal Software GmbH



Dipl.-Ing. (FH) Adrian Langhammer
Co-Organizer

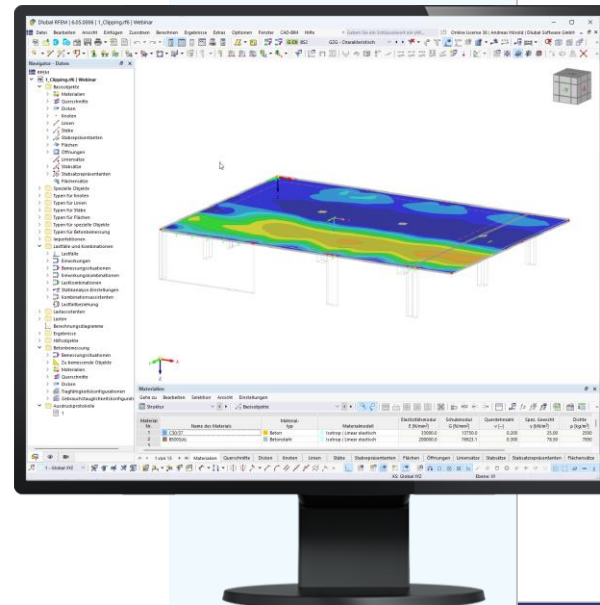
Product Engineering & Customer Support
Dlubal Software GmbH



Dipl.-Ing. Juliane Stopper-Akdag
Co-Organizer

Product Engineering & Customer Support
Dlubal Software GmbH

Calculation of Reinforced Concrete Slabs in RFEM 6



Questions During the Presentation



GoToWebinar Control Panel
Desktop



E-mail: info@dlubal.com



Show or hide control panel



The screenshot shows the GoToWebinar control panel interface. At the top, there is a menu with 'File', 'View', and 'Help'. Below the menu is a 'Sound Check' section with a green bar and a question mark. Underneath, there are two radio buttons: 'Computer audio' (selected) and 'Phone call'. A red 'MUTED' indicator is visible. Below this, there are two dropdown menus for 'Mikrofon (2- Sennheiser USB h...)' and 'Lautsprecher (2- Sennheiser U...'. A volume slider is also present. Below the audio settings is a 'Questions' section with a text input field containing the placeholder '[Enter a question for staff]' and a 'Send' button. At the bottom, the 'Webinar ID: 373-901-987' and the 'GoToWebinar' logo are displayed.



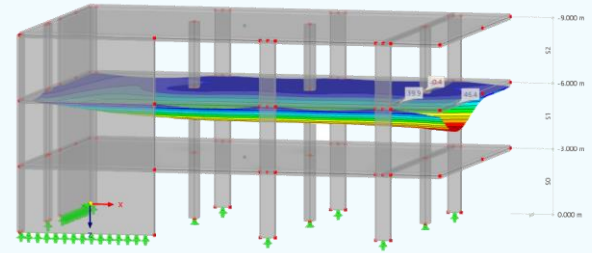
Adjust audio settings

Ask questions



CONTENT

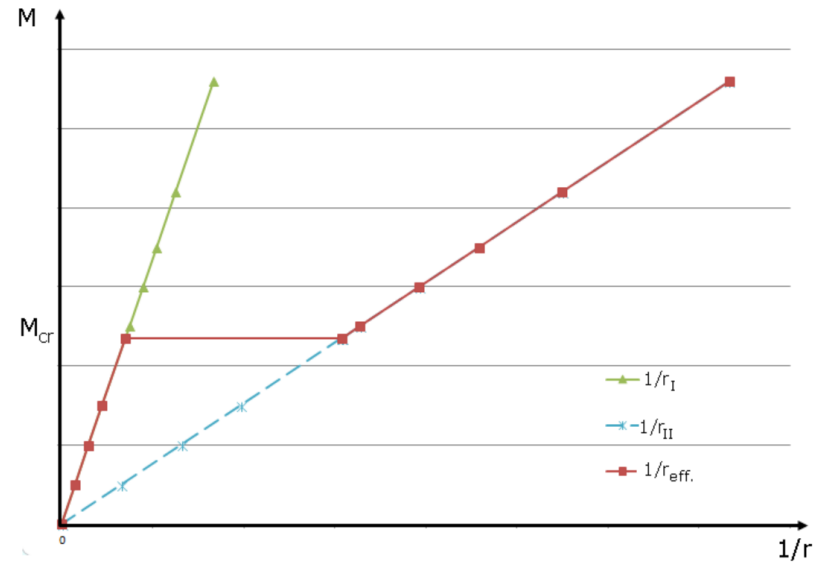
- 01 Static Structure based on Building Model
- 02 Required reinforcement for ULS and SLS
- 03 Definition of a existing reinforcement with help of the automatic design of existing reinforcement
- 04 Design Checks ULS (e.g. Punching)
- 05 Design Checks SLS (e.g. Crack Width)
- 06 Deflection in cracked state incl. Creeping and Shrinkage
- 07 Outlook





Deflection Calculation acc. EN 1992-1-1 7.4.3 distribution coefficient ζ – without Tension Stiffening

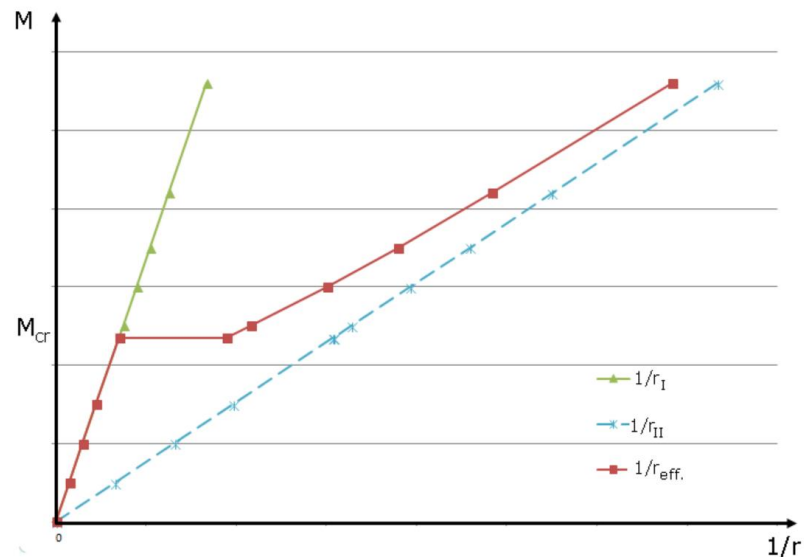
- Deflection with consideration of cracked state
- Determination of the stiffness in uncracked ($\zeta=0$) and fully cracked state ($\zeta=1$) „State II“
- The stiffness depends on following parameters:
 - Existing Reinforcement
 - Plate thickness and high of compression zone
 - Material parameter
 - Creep and Shrinkage





Deflection Calculation acc. EN 1992-1-1 7.4.3 distribution coefficient ζ – including Tension Stiffening

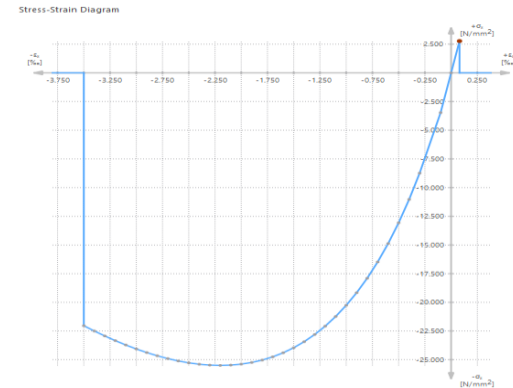
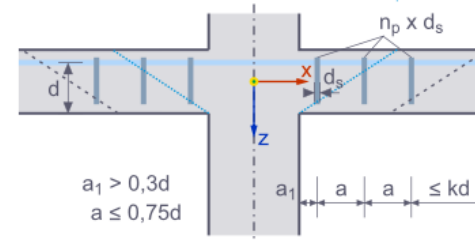
- Deflection with consideration of cracked state based on effective stiffness
- Determination of the stiffness in cracked state ($\zeta = 0$ bis 1)
- Stiffness is determined based on uncracked and fully cracked state. The effective stiffness is calculated based on this two values and depending on determined ζ .





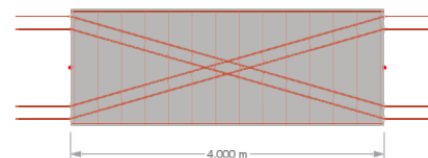
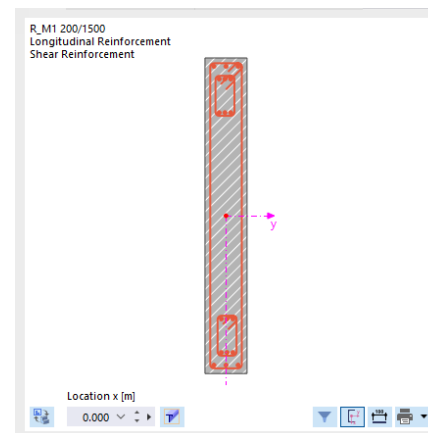
Outlook

- Definition of Punching Reinforcement
- Automatically Layout of Member Reinforcement
- Physical and Geometric Nonlinear Analysis of Reinforced Concrete
 - Direct implementation in the FE analysis
 - Input of individual stress-strain diagrams
 - Creep and Shrinkage
 - Tension Stiffening with Concrete Tensile Strength



Outlook

- Design of Shear Walls and Deep Beams from the AddON „Building Model“
- Seismic Design acc. to Eurocode 8:
 - Required Reinforcement for the Rules of Capacity Design
 - Design of Seismic Walls and Coupling Beams

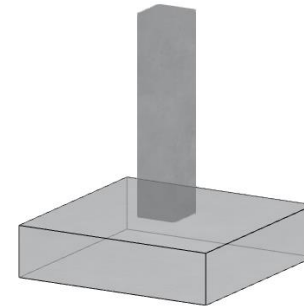
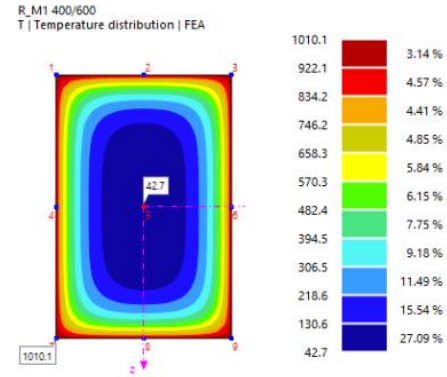




Outlook

- Fire Design acc. to EN 1992-1-2
 - Thermal Analysis

- New AddOn „Concrete Foundations“



Book your free Online Appointment!

Get valuable insights from one of our experts



**Dipl.-Ing. (FH) Dipl.-
Wirtschaftsing. (FH)
Christian Stautner**
Head of Sales



Bastian Ackermann, M.Sc.
Sales

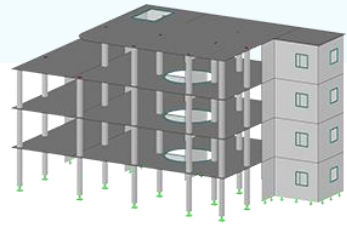


Daniel Dlubal, M.Sc.
COO of Dlubal Software GmbH



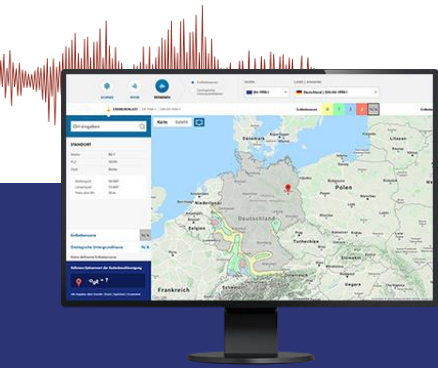


Free Online Services



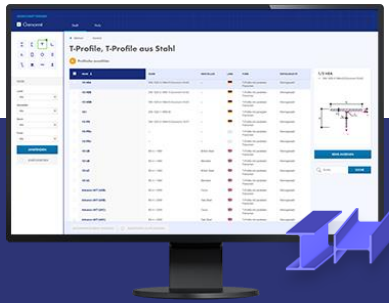
Geo-Zone Tool

Dlubal Software provides an online tool with snow, wind and seismic zone maps.



Cross-Section Properties

With this free online tool, you can select standardized sections from an extensive section library, define parametrized cross-sections and calculate its cross-section properties.



FAQs & Knowledge Base

Access frequently asked questions commonly submitted to our customer support team and view helpful tips and tricks articles to improve your work.



Models to Download

Download numerous example files here that will help you to get started and become familiar with the Dlubal programs.

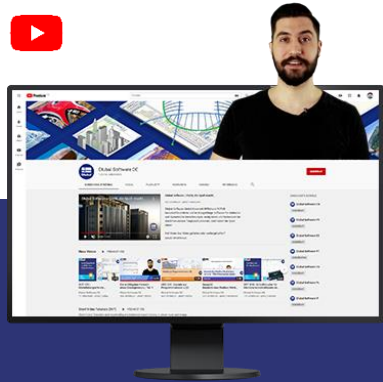




Free Online Services

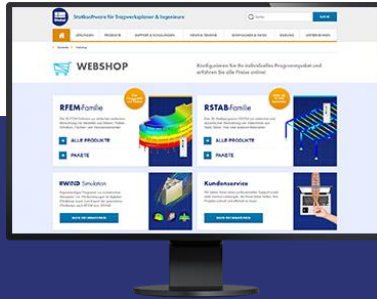
Youtube Channel - Webinars, Videos

Videos and webinars about the structural engineering software.



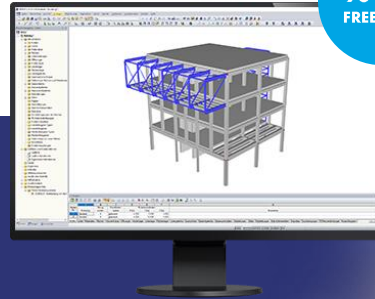
Webshop with Prices

Configure your individual program package and get all prices online!



Trial Licenses

The best way how to learn using our programs is to simply test them for yourself. Download a 90-day free trial version of our structural analysis & design software.



We offer free support via email and chat



— Get Further Details About Dlubal



Visit website
www.dlubal.com

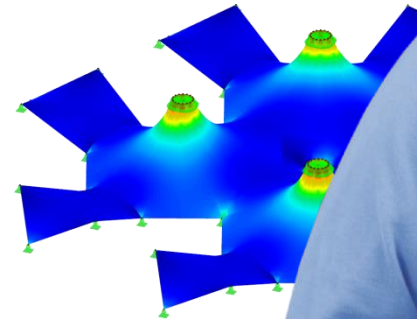
- Videos and recorded webinars
- Newsletters
- Events and conferences
- Knowledge Base articles



See Dlubal Software in action in a webinar



Download free trial license



Dlubal Software GmbH
Am Zellweg 2,
93464 Tiefenbach, Germany

Phone: +49 9673 9203-0
E-mail: info@dlubal.com



www.dlubal.com